

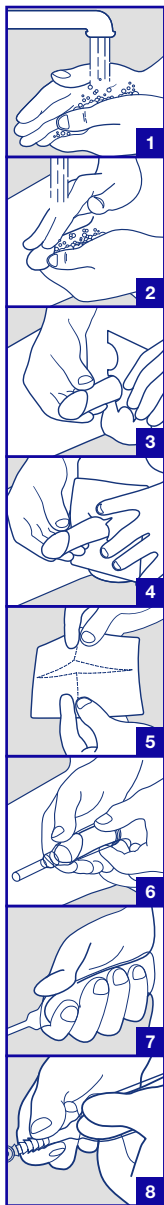
# CliniSure<sup>®</sup>

*URINARY SHEATH*

**Instructions for use**

**CliniMed<sup>®</sup>**

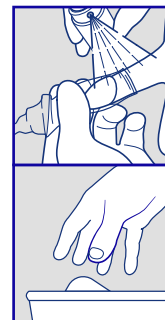
# Application



1. Wash and dry your hands thoroughly before application of the urinary sheath.
2. Wash your penis with warm water and plain non-moisturising soap and dry thoroughly. If required use a barrier wipe, such as LBF®.
3. If this is the first time you are using the CliniSure urinary sheath use the measuring guide provided to ensure you are using the correct size and style of sheath.
4. If necessary, trim any pubic hair or use one of the hair protectors provided. Do not shave as this may cause irritation.
5. Tear along the perforation of the individual pack to remove the sheath, trying not to touch the adhesive.
6. If present, ensure your foreskin is forward covering the glans. Position the sheath over the penis. Unroll the sheath along the shaft of the penis, keeping it straight and ensuring the end of the sheath is fully unrolled.
7. Hold the sheath in place with your hand for up to 1 minute or until you feel the sheath is secure. This will help warm and activate the adhesive and ensure a secure fit. end of the sheath is fully unrolled.
8. Connect the sheath to a drainage bag and ensure the bag is in the closed position before you attach the connector to the spout of the sheath. Refer to the drainage bag manufacturer's instructions for use.

*CliniSure urinary sheath fits most leg and night drainage urine bags that are available on prescription. Urine drainage bags are available in different capacities and with options of tube lengths and choice of taps to enable patient choice for ease of use.*

# Removal



1. Use warm soapy water to remove the sheath. If the sheath does not release by soaking in warm water, use a medical adhesive remover such as Appeel®.
2. Dispose of the sheath in a waste bin and wash your hands.

## Please note

*This is a single use product. Your CliniSure urinary sheath should be changed every 24 hours. This may vary between users. Please speak to your healthcare professional for advice. Always check your skin between applications. If your skin becomes irritated whilst using this product, discontinue use and speak to your healthcare professional before continuing use.*

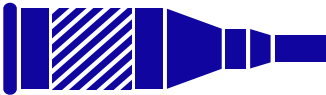
**Indications:** CliniSure Sheath is an all-silicone male external catheter designed for the management of male urinary incontinence.

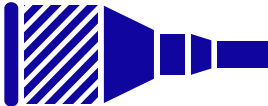
**Contraindications:** Do not use on irritated or compromised skin. Consult your healthcare professional before using if known presence of chronic urinary retention.

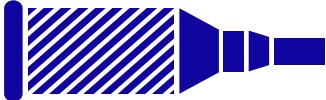
**Precautions:** Do not use if allergic reaction occurs. For good hygiene, change CliniSure Sheath daily. Use of a single device for periods longer than 24 hours may increase the risk of complications.

**Ingredients:** Silicone, Acrylate adhesive

**Did you know we have created plastic free packaging and minimised use of all other materials? All of the CliniSure packaging is recyclable, including the individual sheath packet, the box, the measuring guide and this instruction booklet.**

Standard	Product Code	Size	Quantity	Colour
	CS24S	24mm	Box of 30	Green
	CS28S	28mm	Box of 30	Pink
	CS31S	31mm	Box of 30	Orange
	CS35S	35mm	Box of 30	Grey
	CS40S	40mm	Box of 30	Blue

Pop-on	Product Code	Size	Quantity	Colour
	CS24P	24mm	Box of 30	Green
	CS28P	28mm	Box of 30	Pink
	CS31P	31mm	Box of 30	Orange
	CS35P	35mm	Box of 30	Grey
	CS40P	40mm	Box of 30	Blue

Wide Band	Product Code	Size	Quantity	Colour
	CS24W	24mm	Box of 30	Green
	CS28W	28mm	Box of 30	Pink
	CS31W	31mm	Box of 30	Orange
	CS35W	35mm	Box of 30	Grey
	CS40W	40mm	Box of 30	Blue

## Using CliniSure?

For free home delivery of your prescription continence supplies please contact SecuriCare.

**SecuriCare**

**Call 0800 585 125**

*Extended opening hours Mon - Fri, 7.45am - 9pm*

**Visit [www.securicaremedical.co.uk](http://www.securicaremedical.co.uk)**

For further product information please contact  
CliniMed Careline: 0800 036 0100  
Email: [info@clinimed.co.uk](mailto:info@clinimed.co.uk) Web: [www.clinimed.co.uk](http://www.clinimed.co.uk)

**CliniMed**